

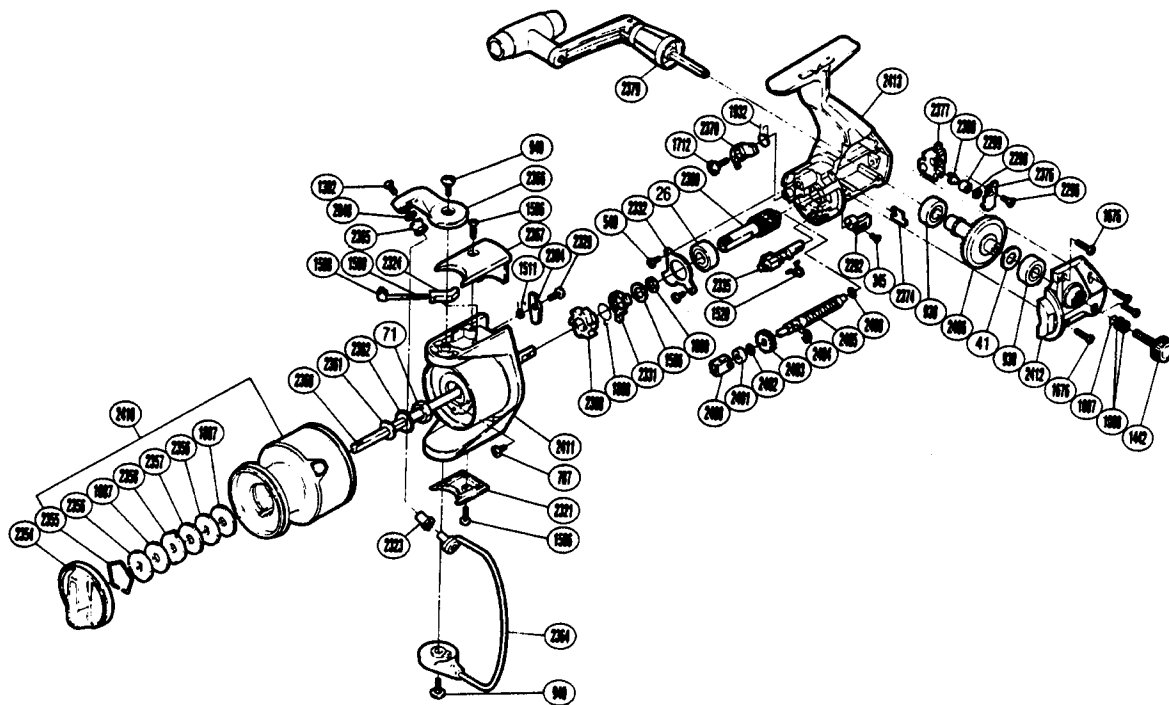
EXPLODED PARTS VIEW

Beast Master GT-X
AERO
8-12#A

SHIMANO

1990 REPAIR MANUAL

Shimano American Corporation, One Shimano Dr.
 Irvine, CA 92718



**TO ORDER: USE RD PREFIX
 WITH PART NUMBER**

PARTS LIST

RD #	DESCRIPTION	RD #	DESCRIPTION	RD #	DESCRIPTION
0026	Ball Bearing	1932	Anti-Reverse Pawl Spring	2365	Line Roller
0041	Drive Gear Washer	2048	Line Roller Washer	2366	Bail Arm
0071	Rotor Nut	2292	Anti-Reverse Lever	2367	Bail Spring Cover
0345	Anti-Reverse Lever Screw	2296	Slider Retainer Screw	2368	Anti-Reverse Ratchet
0540	Anti-Reverse Pawl Screw	2298	Spacer	2370	Anti-Reverse Pawl
0787	Nut Lock Screw	2299	Oscillating Slider Bushing	2374	Worm Shaft Retainer
0930	Ball Bearing	2300	Oscillating Pawl	2376	Oscillating Pawl Cover
0940	Bail Trip Cam Screw	2321	Rotor Side Cover	2377	Oscillating Slider
1007	Lock Washer Retainer	2323	Line Roller Bushing	2379	Handle Assembly
1008	Handle Lock Washer	2324	Bail Spring Guide (B)	2394	Bail Trip Lever
1087	Drag Washer 1	2329	Bail Trip Lever Screw	2399	Pinion Gear
1302	Line Roller Screw	2331	Anti-Reverse Lock Out	2400	Bearing Spacer
1442	Handle Screw Cap	2332	Bearing Retainer	2401	Ball Bearing
1506	Bail Spring Cover Screw	2335	Anti-Reverse Cam	2402	Bearing Washer
1508	Bail Spring Guide A	2354	Drag Knob	2403	Idle Gear
1509	Bail Spring	2355	Drag Washers Retainer	2404	Idle Gear Retainer
1511	Lever Spring	2356	Key Washer	2405	Worm Shaft
1520	Anti-Reverse Cam Spring	2357	Drag Washer 2	2406	Drive Gear
1596	Bushing Washer	2358	Eared Washer	2409	Worm Shaft Spacer
1676	Side Cover Screw	2360	Main Shaft	2410	Spool Assembly
1712	Anti-Reverse Pawl Screw	2361	Spool Washer	2411	Rotor
1888	Anti-Reverse Lock Out Spring	2362	Spool Support	2412	Side Cover
1890	Bushing Washer	2364	Bail Assembly	2413	Body

Prices and specifications subject to change without notice.